



# Corvette C4

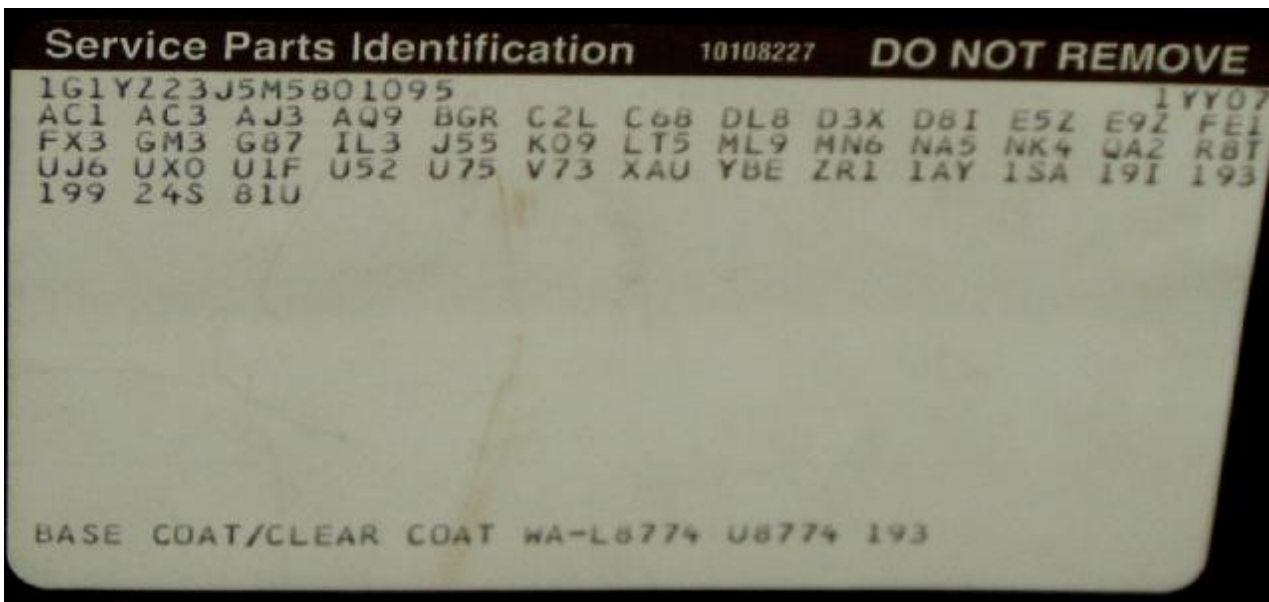


## Corvette Option Codes 1984 - 1996

### Wo finde ich den Option Code Label:

Beim Targa im Deckel der Mittelkonsole und beim Cabrio im Deckel des hinteren Ablagefach.

Jede Corvette C4 ist ab Werk mit so einem Option Label (1991) ausgestattet.





# Corvette C4



## Übersicht 1984 - 1996 Corvette RPO Codes

**Anmerkung: Es sind nicht alle RPO Codes verfügbar für die 1984-1996 Corvette.**

- ! 00L - Only primer secondary (lower) exterior
- ! 00U - Only primer exterior
- ! 01L - Special non-Corvette secondary (lower) exterior
- ! 01U - Special non-Corvette exterior
- ! 02L - Special not color charted secondary (lower) exterior
- ! 02U - Special not color charted exterior
- ! 05L - Dark purple Metallic secondary (lower) exterior
- ! 05U - Dark purple Metallic exterior

- 
- ! 103 - White leather interior 1984-92
  - ! 103 - Arctic White leather interior 1993-96
  - ! 10I - Arctic White interior
  - ! 10T - Arctic White convertible top
  - ! 10U - White exterior 1984-92
  - ! 10U - Arctic White exterior 1993-96
  - ! 113 - White leather interior
  - ! 119 - White safety belts
  - ! 11P - White wheels
  - ! 11T - White vinyl convertible top
  - ! 122 - Graphite leather interior
  - ! 12C - Graphite cloth interior
  - ! 12I - Graphite interior trim
  - ! 12V - Graphite cloth sport seats
  - ! 13L - Silver Metallic secondary (lower) exterior
  - ! 13U - Silver Metallic exterior 1985-88
  - ! 13U - Sebring Silver Metallic exterior 1996
  - ! 143 - Light Gray leather interior
  - ! 144 - Light Gray leather interior
  - ! 14I - Light Gray interior trim
  - ! 152 - Medium Gray leather interior
  - ! 15C - Medium Gray cloth interior
  - ! 15I - Medium Gray interior trim
  - ! 15V - Medium Gray cloth sport seats
  - ! 16L - Bright Silver Metallic secondary (lower) exterior
  - ! 16T - Bright White convertible top
  - ! 16U - Bright Silver Metallic exterior
  - ! 17P - Silver Gray wheels
  - ! 18L - Medium Gray Metallic secondary (lower) exterior
  - ! 18U - Medium Gray Metallic exterior
  - ! 192 - Black leather interior
  - ! 193 - Black leather interior
  - ! 194 - Black leather interior
  - ! 195 - Black leather interior
  - ! 199 - Black safety belts
  - ! 19C - Black cloth interior
  - ! 19G - Black cloth interior



# Corvette C4



- ! 19I - Black interior trim
- ! 19T - Black convertible top
- ! 19U - Black exterior

- 
- ! 1AA - Delete marketed base option package
  - ! 1AY - Stock order
  - ! 1AZ - Modification stock order or order sold
  - ! 1BL - Components of Z51 performance handling package
  - ! 1CS - Modification order caravan driveway
  - ! 1DA - Sequencing schedule 01
  - ! 1DB - Sequencing schedule 02
  - ! 1DC - Sequencing schedule 03
  - ! 1DD - Sequencing schedule 04
  - ! 1DE - Sequencing schedule 05
  - ! 1DF - Sequencing schedule 06
  - ! 1DG - Sequencing schedule 07
  - ! 1DH - Sequencing schedule 08
  - ! 1DI - Sequencing schedule 09
  - ! 1DJ - Sequencing schedule 10
  - ! 1DK - Sequencing schedule 11
  - ! 1DL - Sequencing schedule 12
  - ! 1DM - Sequencing schedule 13
  - ! 1DN - Sequencing schedule 14
  - ! 1DO - Sequencing schedule 15
  - ! 1DP - Sequencing schedule 16
  - ! 1DQ - Sequencing schedule 17
  - ! 1DR - Sequencing schedule 18
  - ! 1DS - Sequencing schedule 19
  - ! 1DT - Sequencing schedule 20
  - ! 1DU - Sequencing schedule 21
  - ! 1DV - Sequencing schedule 22
  - ! 1DW - Sequencing schedule 23
  - ! 1DX - Sequencing schedule 24
  - ! 1DY - Sequencing schedule 25
  - ! 1DZ - Sequencing schedule 26
  - ! 1SA - Marketed option package 1
  - ! 1SB - Marketed option package 2
  - ! 1SC - Marketed option package 3
  - ! 1SD - Marketed option package 4
  - ! 1SE - Marketed option package 5
  - ! 1SF - Marketed option package 6

- 
- ! 207 - Sport package
  - ! 20L - Light Blue Metallic secondary (lower) exterior
  - ! 20U - Light Blue Metallic exterior 1984-85
  - ! 20U - Medium Blue Metallic exterior 1986-89
  - ! 212 - Blue leather interior
  - ! 21C - Blue cloth interior
  - ! 21I - Medium Blue interior trim



# Corvette C4



- ! 219 - Medium Blue safety belts
- ! 223 - Steel Blue leather interior
- ! 229 - Steel Blue safety belts
- ! 22I - Steel Blue interior trim
- ! 22T - Blue convertible top
- ! 23L - Medium Blue Metallic secondary (lower) exterior
- ! 23U - Medium Blue Metallic exterior
- ! 24S - Blue tint roof panel
- ! 25L - Steel Blue Metallic secondary (lower) exterior
- ! 25U - Steel Blue Metallic exterior
- ! 282 - Medium Blue leather interior
- ! 28C - Medium Blue cloth interior
- ! 28I - Medium Blue interior trim
- ! 28U - Admiral Blue exterior 1994-96
- ! 28U - Dark Blue Metallic exterior 1988-89
- ! 28V - Medium Blue cloth sport seats

- 
- ! 31U - Arctic Pearl exterior
  - ! 33L - Light Driftwood Metallic secondary (lower) exterior
  - ! 33U - Light Driftwood Metallic exterior
  - ! 34T - Beige II convertible top
  - ! 35U - Yellow exterior

- 
- ! 4001ZA - Malcolm Konner Special Edition
  - ! 40A - White accent stripes
  - ! 40L - White secondary (lower) exterior
  - ! 40U - White exterior
  - ! 41I - Black interior trim
  - ! 41L - Black secondary (lower) exterior
  - ! 41P - Black wheels
  - ! 41T - Black convertible top
  - ! 41U - Black exterior
  - ! 42U - Turquoise Metallic exterior
  - ! 43U - Bright Aqua Metallic exterior
  - ! 45U - Polo green II Metallic exterior 1992-93
  - ! 45U - Polo green Metallic exterior 1994-96

- 
- ! 53U - Competition Yellow exterior 1990-96
  - ! 53U - Gold Metallic exterior 1984-87
  - ! 592 - Silver Beige leather interior
  - ! 59L - Silver Beige Metallic secondary (lower) exterior
  - ! 59U - Silver Beige Metallic exterior

- 
- ! 602 - Saddle leather interior
  - ! 603 - Saddle leather interior
  - ! 609 - Saddle safety belts
  - ! 60C - Saddle cloth interior
  - ! 60I - Saddle interior trim
  - ! 622 - Saddle cloth interior



## Corvette C4



- ! 62C - Saddle cloth interior
- ! 62I - Saddle interior trim
- ! 62V - Saddle cloth sport seats
- ! 63L - Light Bronze Metallic secondary (lower) exterior
- ! 63U - Light Bronze Metallic exterior
- ! 643 - Light Beige leather interior
- ! 649 - Light Beige safety belts
- ! 64I - Light Beige interior trim
- ! 64S - Bronze roof panel
- ! 652 - Bronze leather interior
- ! 65C - Bronze cloth interior
- ! 65I - Bronze interior trim
- ! 65V - Bronze cloth sport seats
- ! 66U - Copper Metallic exterior 1986-94
- ! 66U - Dark bronze Metallic exterior 1984-85
- ! 67T - Saddle vinyl convertible top
- ! 68T - Beige convertible top
- ! 68U - Dark red Metallic exterior 1989-90
- ! 68U - Ruby red Metallic exterior 1993
- ! 69U - Medium brown Metallic exterior

- 
- ! 703 - Red leather interior
  - ! 704 - Red Collector edition leather interior
  - ! 705 - Red & black Grand Sport leather interior
  - ! 70I - Torch red interior trim

- 
- ! A-2 - Leather seats
  - ! A-8 - Leather sport seats
  - ! A1E - Oshawa delivery, additional windshield washer fluid
  - ! A26 - European windows
  - ! A42 - Standard leather seats
  - ! A4G - Canadian requirements deleted
  - ! A51 - Sport leather seats deleted
  - ! A5J - Canadian accounting purposes
  - ! AC1 - Power passenger sport seat
  - ! AC3 - Power driver sport seat
  - ! ACM - Vehicle lead unit
  - ! AG1 - Power driver sport seat
  - ! AG2 - Power passenger sport seat
  - ! AG9 - Power driver seat
  - ! AJ3 - Airbag restraint system
  - ! AK5 - Inflatable seats
  - ! AQ9 - Sport seats - cloth (1984)
  - ! AQ9 - Sport seats - leather
  - ! AR9 - Base seats - leather
  - ! AS8 - Manual restraint seats
  - ! AS9 - Cloth sports seats
  - ! AU0 - Remote entry second transmitter
  - ! AU3 - Power door locks



# Corvette C4



- ! AV3 - Cargo tie down fastener
- ! AX4 - European manual restraint seat

- 
- ! B-8 - Cloth sport seats
  - ! B0A - Production week 19
  - ! B0B - Production week 20
  - ! B0C - Production week 21
  - ! B0D - Production week 22
  - ! B0E - Production week 23
  - ! B0F - Production week 24
  - ! B0G - Production week 25
  - ! B0H - Production week 26
  - ! B0J - Production week 27
  - ! B0K - Production week 28
  - ! B0L - Production week 29
  - ! B0M - Production week 30
  - ! B0N - Production week 31
  - ! B0P - Production week 32
  - ! B0Q - Production week 33
  - ! B0R - Production week 34
  - ! B0S - Production week 35
  - ! B0T - Production week 36
  - ! B0U - Production week 37
  - ! B0V - Production week 38
  - ! B0W - Production week 39
  - ! B0X - Production week 52
  - ! B0Y - Production week 3
  - ! B16 - Special option package processing
  - ! B1T - Plant build-out
  - ! B1X - Optional steering gear ratio
  - ! B18 - 35th anniversary interior ornamentation
  - ! B2B - Components of Z52 sport handling package
  - ! B2K - Callaway twin-turbo
  - ! B2M - First three weeks orders
  - ! B3W - Advance price sheet
  - ! B4H - Export noise control modification
  - ! B4M - Custom feature package
  - ! B4P - Radiator cooling boost fan
  - ! B4Z - Custom option package
  - ! B57 - 35th anniversary exterior ornamentation
  - ! B6R - Decal package
  - ! B74 - Moldings for extra wide wheels
  - ! B8M - Production week 1
  - ! B8N - Production week 2
  - ! B8P - Production week 40
  - ! B8Q - Production week 41
  - ! B8R - Production week 42
  - ! B8S - Production week 43
  - ! B8T - Production week 44



## Corvette C4



- ! B8U - Production week 45
  - ! B8V - Production week 46
  - ! B8W - Production week 47
  - ! B8X - Production week 48
  - ! B8Y - Production week 49
  - ! B8Z - Production week 50
  - ! B9A - Production week 51
  - ! B9C - Production week 3
  - ! B9D - Production week 4
  - ! B9E - Production week 5
  - ! B9F - Production week 6
  - ! B9G - Production week 7
  - ! B9H - Production week 8
  - ! B9K - Cloth trim, Processing option
  - ! BAG - Lose parts package
  - ! BGR - Bowling Green assembly
  - ! BK2 - Callaway twin turbo
  - ! BP4 - Radiator boost fan
  - ! BX1 - Front end special ornamentation
  - ! BZ0 - Production week 9
  - ! BZ1 - Production week 10
  - ! BZ2 - Production week 11
  - ! BZ3 - Production week 12
  - ! BZ4 - Production week 13
  - ! BZ5 - Production week 14
  - ! BZ6 - Production week 15
  - ! BZ7 - Production week 16
  - ! BZ8 - Production week 17
  - ! BZ9 - Production week 18
- 
- ! C05 - Convertible folding top
  - ! C18 - Export windshield washer, arms and blades
  - ! C2L - Dual removable roof panels
  - ! C49 - Electric rear window defogger
  - ! C60 - Manual air condition
  - ! C68 - Automatic electronic air condition
  - ! CC2 - Auxiliary hardtop
  - ! CC3 - Transparent roof panel
  - ! CF7 - Non-transparent roof panel
  - ! CK4 - Delivery Greece
  - ! CR5 - Delivery Yugoslavia
  - ! CR6 - Delivery Poland
  - ! CR7 - Delivery Hungary
  - ! CS0 - Delivery The Czech republic
  - ! CT1 - Delivery Belgium
  - ! CT2 - Delivery Austria
  - ! CT3 - Delivery Germany
  - ! CT4 - Delivery Luxembourg
  - ! CT5 - Delivery The Netherlands



## Corvette C4



- ! CT6 - Delivery Italy
  - ! CT7 - Delivery Denmark
  - ! CT9 - Delivery Spain
  - ! CU1 - Delivery Norway
  - ! CU2 - Delivery Finland
  - ! CU3 - Delivery France
  - ! CU4 - Delivery Sweden
  - ! CU5 - Delivery Switzerland
  - ! CU7 - Delivery Kuwait
  - ! CU8 - Delivery Saudi Arabia
  - ! CU9 - Delivery United Kingdom
  - ! CV3 - Delivery Mexico
  - ! CV5 - Delivery Japan
  - ! CV6 - Delivery Chile
  - ! CV7 - Delivery England
  - ! CVA1 - Marketed option package 2
  - ! CVAB - Marketed option package 1
  - ! CW1 - Delivery Korea
  - ! CW2 - Delivery The Gulf States
  - ! CW3 - Delivery Asia or Pacific countries
  - ! CW4 - Delivery The Caribbeans
  - ! CW6 - Delivery Guam
  - ! CW7 - Delivery Puerto Rico or US Virgin Islands
  - ! CW8 - Delivery Mexico or to Mexican border dealer
  - ! CW9 - Delivery unregulated countries
  - ! CX2 - Delivery Columbia
  - ! CX3 - Delivery Ecuador
  - ! CYA1 - Marketed option package 2
  - ! CYAB - Marketed option package 1
  - ! CZ1 - Delivery Central America
  - ! CZ2 - Delivery China
  - ! CZ3 - Delivery Russia
- 
- ! D3W - Speedometer driven gear 25513044 red
  - ! D3X - Speedometer driven gear 25513049 green
  - ! D36 - Export inside rearview 10" tilt mirror
  - ! D4D - Speedometer driven gear 25513047
  - ! D4L - Speedometer driven gear 25513050 purple
  - ! D60 - Trim color compatibility override
  - ! D64 - Passenger vanity mirror
  - ! D74 - Illuminated driver vanity mirror
  - ! D7A - Speedometer driven gear 25513042 orange
  - ! D7B - Speedometer driven gear 25513043 orange
  - ! D7C - Speedometer driven gear 25513045
  - ! D81 - Vehicle sensor?
  - ! D82 - Special paint
  - ! D84 - Two-tone paint
  - ! D8I - Speedometer sensor 10456089
  - ! D8K - Speedometer sensor 10456091





# Corvette C4



- ! D8L - Speedometer sensor 10456092
- ! D98 - Speedometer sensor 25007308 ?
- ! D9A - Speedometer sensor 25007224
- ! D9B - Speedometer sensor 85007308 ?
- ! DC7 - Twin remote outside mirrors
- ! DC8 - Breakaway side mirrors - Europe
- ! DG7 - Twin remote outside mirrors
- ! DL5 - Roadside service information decal
- ! DL8 - Twin remote heated outside mirrors
- ! DS1 - Diplomatic sales

- 
- ! E45 - Protective convertible top cover
  - ! E5C - Delete speedometer adaptor
  - ! E5Z - Delete speedometer adaptor
  - ! E9Z - Delete speedometer key
  - ! EXP - Export vehicle

- 
- ! F45 - Selective real time damping
  - ! F51 - Heavy duty shock absorber
  - ! F58 - Heavy duty front stabilizer bar
  - ! FE1 - Base suspension
  - ! FE3 - Sport suspension
  - ! FE7 - High performance suspension
  - ! FE9 - Federal emission certification
  - ! FG3 - Preloaded gas shock absorbers
  - ! FLT - Fleet processing
  - ! FX3 - Selective ride and handling

- 
- ! G44 - Rear axle 3.07 ratio
  - ! G87 - Ring gear 8.50 inch
  - ! G92 - Rear axle performance ratio
  - ! GH0 - Rear axle 3.54 ratio
  - ! GM1 - Rear axle 2.59 ratio
  - ! GM3 - Rear axle 3.45 ratio
  - ! GT7 - Rear axle 3.33 ratio
  - ! GU2 - Rear axle 2.73 ratio
  - ! GW4 - Rear axle 3.31 ratio

- 
- ! HE3 - Rear axle 3,07 ratio

- 
- ! IL3 - Interior trim design L3
  - ! IL4 - Interior trim design L4
  - ! IL5 - Interior trim design L5
  - ! IP3 - Interior trim design P3
  - ! IPC - Interior trim design (PC) (AR9) less finished parts

- 
- ! J55 - High performance brake package
  - ! JL9 - Anti-lock front and rear disc brakes
-



## Corvette C4



- ! K05 - Engine block heater
- ! K09 - 120 amp generator
- ! K29 - Powertrain control module
- ! K34 - Cruise control
- ! K61 - 97 amp generator
- ! K68 - 105 amp generator
- ! K69 - Additional ignition key
- ! K90 - 108 amp generator
- ! KB2 - Cast iron cylinder heads
- ! KC4 - Engine oil cooler
- ! KG9 - 140 amp generator
- ! KW2 - 124 amp generator

- 
- ! L83 - Crossfire injection 5.7 L engine
  - ! L98 - Tuned port injection 5.7 L engine
  - ! LT1 - Sequential fuel injection Generation II 5.7 L engine
  - ! LT4 - Sequential fuel injection Generation III 5.7 L engine
  - ! LT5 - DOHC, 32 Valve 5.7 L engine

- 
- ! M30 - Automatic 4-speed electronic transmission
  - ! MAE - Marketing area Europe
  - ! MAU - Unregulated marketing area
  - ! MD8 - Automatic 4-speed transmission
  - ! MK2 - Manual 4-speed Doug Nash transmission
  - ! ML9 - Manual 6-speed, ZF-transmission
  - ! MM0 - Automatic transmission
  - ! MM4 - 4-speed manual transmission
  - ! MN6 - 6-speed manual transmission
  - ! MX0 - Automatic transmission
  - ! MY6 - Manual 4-speed transmission

- 
- ! N82 - Sport wheels equipment
  - ! N84 - Delete spare tire
  - ! NA5 - Federal emission system requirements
  - ! NB1 - Federal emission closed loop system
  - ! NB6 - California emission system, TIER 1
  - ! NB8 - California emission override
  - ! NC7 - Federal emission override
  - ! NF2 - Federal emission system, TIER 1
  - ! NG1 - New York state emissions package
  - ! NG5 - Fifty state certification emission registration
  - ! NK4 - Sport leather steering wheel
  - ! NM5 - Canada emission system
  - ! NM8 - Compatible leaded fuel system
  - ! NN5 - California emission package

- 
- ! P43 - Delete spare tire inflator
  - ! PW9 - Cast aluminum wheels, 16 x 9.5
  - ! PX2 - Aluminum wheels



# Corvette C4



! PY3 - Aluminum wheels 16 x 8.5

- 
- ! QA0 - Styled aluminum wheels, 17 x 8.5"
  - ! QA1 - Styled aluminum wheels, 17 x 9.5"
  - ! QA2 - Styled aluminum wheels, 17 x 9.5" front, 17 x 11" rear
  - ! QB6 - Styled aluminum wheels 17 x 8.5" front, 17 x 9.5" rear
  - ! QD2 - Painted styled aluminum wheels 17 x 8.5" front, 17 x 9.5" rear
  - ! QWT - All tires P245/60 R15
  - ! QZD - 16" wheels with P255/50 VR16
  - ! QZY - All tires P255/50 ZR16

- 
- ! R11 - Service tech training center
  - ! R6A - Control sales item 1
  - ! R6B - Control sales item 2
  - ! R6C - Control sales item 3
  - ! R6D - Control sales item 4
  - ! R6E - Control sales item 5
  - ! R6F - Control sales item 6
  - ! R6G - Control sales item 7
  - ! R6H - Control sales item 8
  - ! R6I - Control sales item 9
  - ! R6J - Control sales item 10
  - ! R6K - Control sales item 11
  - ! R6L - Control sales item 12
  - ! R6M - Control sales item 13 New Jersey cost surcharge
  - ! R6N - Control sales item 14
  - ! R6P - Control sales item 15
  - ! R6Q - Control sales item 16
  - ! R6R - Control sales item 17
  - ! R6S - Control sales item 18
  - ! R6T - Control sales item 19
  - ! R6U - Control sales item 20
  - ! R6V - Control sales item 21
  - ! R6W - Control sales item 22
  - ! R6X - Control sales item 23
  - ! R6Y - Control sales item 24
  - ! R6Z - Control sales item 25
  - ! R7A - Control sales item 26 special option processing
  - ! R7B - Control sales item 27
  - ! R7C - Control sales item 28
  - ! R7D - Control sales item 29
  - ! R7E - Control sales item 30
  - ! R7F - Control sales item 31
  - ! R7G - Control sales item 32
  - ! R7H - Control sales item 33
  - ! R7I - Control sales item 34
  - ! R7J - Control sales item 35
  - ! R7K - Control sales item 36 Special option processing
  - ! R7L - Control sales item 37



# Corvette C4



- ! R7M - Control sales item 38
- ! R7N - Control sales item 39
- ! R7P - Control sales item 40
- ! R7Q - Control sales item 41
- ! R7R - Control sales item 42
- ! R7S - Control sales item 43
- ! R7T - Control sales item 44
- ! R7U - Control sales item 45
- ! R7V - Control sales item 46
- ! R7W - Control sales item 47
- ! R7X - Control sales item 48
- ! R7Y - Control sales item 49
- ! R7Z - Control sales item 50
- ! R8A - Control sales item 51
- ! R8B - Control sales item 52
- ! R8C - Control sales item 53 National Corvette Museum delivery
- ! R8D - Control sales item 54
- ! R8E - Control sales item 55
- ! R8F - Control sales item 56
- ! R8G - Control sales item 57
- ! R8H - Control sales item 58
- ! R8I - Control sales item 59
- ! R8J - Control sales item 60
- ! R8K - Control sales item 61
- ! R8L - Control sales item 62
- ! R8M - Control sales item 63
- ! R8N - Control sales item 64
- ! R8P - Control sales item 65
- ! R8Q - Control sales item 66
- ! R8R - Control sales item 67
- ! R8S - Control sales item 68
- ! R8T - Control sales item 69
- ! R8U - Control sales item 70
- ! R8V - Control sales item 71
- ! R8W - Control sales item 72
- ! R8X - Control sales item 73
- ! R8Y - Control sales item 74
- ! R8Z - Control sales item 75
- ! R9A - Control sales item 76
- ! R9B - Control sales item 77
- ! R9C - Control sales item 78
- ! R9D - Control sales item 79
- ! R9E - Control sales item 80
- ! R9F - Control sales item 81
- ! R9G - Control sales item 82
- ! R9H - Control sales item 83
- ! R9I - Control sales item 84
- ! R9J - Control sales item 85
- ! R9K - Control sales item 86



## Corvette C4



- ! R9L - Control sales item 87
- ! R9M - Control sales item 88
- ! R9N - Control sales item 89
- ! R9P - Control sales item 90
- ! R9Q - Control sales item 91
- ! R9R - Control sales item 92
- ! R9S - Control sales item 93
- ! R9T - Control sales item 94
- ! R9U - Control sales item 95
- ! R9V - Control sales item 96
- ! R9W - Control sales item 97
- ! R9X - Control sales item 98
- ! R9Y - Control sales item 99
- ! R9Z - Control sales item 100

- 
- ! SPECU - Silver beige/black exterior
  - ! SPU - Silver beige/black exterior

- 
- ! T61 - Daytime running lights
  - ! T72 - Left hand traffic headlamps
  - ! T90 - Export signaling and marker lamps
  - ! T93 - Special tail and stop lamps
  - ! TG1 - Military personnel delivery

- 
- ! U03 - Horn noise regulation
  - ! U04 - heavy duty radiator with transmission cooler
  - ! U19 - Kilometers and miles instrument cluster
  - ! U1F - Delco Bose stereo system with CD and cassette
  - ! U52 - Electronic instrument cluster
  - ! U75 - Power antenna
  - ! UIF - Delco Bose stereo system with CD and cassette
  - ! UJ6 - Low tire pressure warning system
  - ! UL2 - European radio frequencies
  - ! UL5 - Radio delete
  - ! UM6 - Electronically tuned stereo radio with cassette
  - ! UN8 - AM/FM stereo system with citizens band
  - ! UQ4 - Delco Bose four speaker system
  - ! UU8 - Delco Bose AM/FM stereo radio with cassette
  - ! UX0 - Delco Bose six speaker system
  - ! UXC - Special radio provisions
  - ! UY5 - Four speaker system
  - ! UY6 - Special wiring provisions

- 
- ! V01 - Heavy duty radiator
  - ! V08 - Heavy duty cooling
  - ! V56 - Luggage carrier (convertible)
  - ! V73 - Vehicle statement certification, US or Canada
  - ! V76 - Tow hook
  - ! V78 - Delete vehicle statement



# Corvette C4



- ! V87 - Vehicle statement, Gulf States organizations
- ! VB1 - Shipping label Japan
- ! VC1 - Price/fuel economy label and courtesy delivery
- ! VC2 - Hydraulic brake fluid label
- ! VC4 - Price/fuel economy label, Puerto Rico and Virgin Islands
- ! VC5 - Shipping label, except US, US possessions or Japan
- ! VC7 - Price/fuel economy label, Guam
- ! VD1 - European option provisions
- ! VE1 - Japanese option provisions
- ! VE2 - Applied protector
- ! VG1 - Underhood corrosion protector
- ! VG6 - Bumper impact information label, California
- ! VG8 - Vehicle label, notice to buyer
- ! VG9 - Protector wax, exterior body
- ! VH3 - Bumper impact information label, Hawaii
- ! VH5 - Vehicle identification plate
- ! VJ9 - California compliance emission label
- ! VK3 - Front license plate mounting package
- ! VL2 - Compact spare wheel caution label
- ! VL4 - Front license plate mounting package
- ! VL5 - Rear license plate mounting package
- ! VL6 - Front license plate mounting package for Japan
- ! VL7 - Information label front and rear bumper impact, New York
- ! VM3 - Information consumer label, bumper impact standards
- ! VO1 - Heavy duty radiator
- ! VQ8 - Fleet program, guaranteed partial repurchase
- ! VS7 - Non-saleable vehicle
- ! VX7 - Fleet program, cash on delivery, daily rental

- 
- ! W82 - Motor Trend Car of Year Decal
  - ! W92 - Direct sale
  - ! WD0 - Start of platform
  - ! WD1 - Pilot vehicle
  - ! WD2 - Prototype vehicle
  - ! WDV - Partial deductible warranty waiver
  - ! WT9 - Order modification for domestic delivery
  - ! WY5 - Performance package, extended mobility tires (EMT)

- 
- ! X05 - Sales processing option 14
  - ! XAA - Front tire P255/45 ZR17
  - ! XAU - Front tire P275/40 ZR17
  - ! XCI - Front tire P255/45 ZR17
  - ! XFR - Front tire P255/45 ZR17, EMT
  - ! XJ5 - Special equipment for Sweden

- 
- ! Y6X - Pre-order evaluation test
  - ! YAA - Rear tire P285/40 ZR17
  - ! YAU - Rear tire P275/40 ZR17
  - ! YBE - Rear tire P315/35 ZR17



## Corvette C4



- ! YCI - Rear tire 255/45 ZR17
- ! YE8 - Corvette engineering department test vehicle
- ! YF5 - California emissions package
- ! YFR - EMT rear tire P255/45 ZR17
- ! YFS - EMT rear tire P285/40 ZR17

- 
- ! Z01 - 35th anniversary package
  - ! Z07 - Adjustable performance handling package
  - ! Z15 - Collector edition appearance package
  - ! Z16 - Grand Sport appearance package
  - ! Z25 - 40th anniversary appearance package
  - ! Z31 - Advance price sheet
  - ! Z49 - Mandatory Canadian base equipment modifications
  - ! Z4Z - Indy pace car replica
  - ! Z51 - Performance handling package
  - ! Z52 - Sport handling package
  - ! Z6A - Rear window and side mirror defoggers
  - ! ZR1 - Special performance package
  - ! ZR6 - GM show vehicle
  - ! ZV1 - Manufacturers statement of origin



# Corvette C4



| Andere Option Codes |                                    |  |   |
|---------------------|------------------------------------|--|---|
| RPO                 | Beschreibung                       |  | RPO Beschreibung                                |
| AS8                 | Manual Restraint System            |  |   |
| AJ3                 | Airbag System SIR                  |  | LT1 Motor 8-Cyl., V8, 5.7L (VIN P)              |
| AX4                 | Europäische Sicherheitsgurte       |  | LT5 5.7 Liter, V-8 Motor, MPFI, DOHC (VIN J)    |
| CF7                 | Nicht durchsichtiges Targa Dach    |  |   |
| A26                 | Europäische Scheiben               |  | MX0 Automatik Getriebe mit Overdrive            |
| C49                 | Heizbare Heckscheibe               |  | MD8 4-Gang. Automatik, THM 700-R4               |
|                     |                                    |  | ML9 6-speed Manual Transmisson (ZF)             |
| C60                 | Manuale Klimaanlage                |  | NA5 Blei Benzin Emission System                 |
| D3X                 | Tacho Übersetzung (25513049)       |  | NK4 Sport Leder Lenkrad                         |
| D4D                 | Tacho Übersetzung (25513047)       |  | NM8 Abgas Modifikation Export, Benzin mit Blei  |
| D7B                 | Tacho Übersetzung (25513050)       |  | QA1 17x9.5 Aluminium Felgen                     |
| D7C                 | Tacho Übersetzung (25513043)       |  | QA2 Aluminium Felgen, 17x9.5 vorn, 17x11 hinten |
| D8E                 | Tacho Sensor (10456021)            |  | QZD P255/50VR16, Stahl Gürtel Reifen            |
| D8F                 | Tacho Sensor (10456022)            |  | T61 Tageslicht Beleuchtung                      |
| D8H                 | Tacho Sensor (10456039)            |  | T72 Positionslampen                             |
| D9A                 | Tacho Sensor (25007224)            |  | T84 Positionslampen                             |
| D9B                 | Tacho Sensor (25007308)            |  | T85 Left Rule of Road Rücklichter               |
| DC7                 | Elektronik LH & RH Außen Spiegel   |  | T89 Stop Lampe für Europa                       |
| DC8                 | Elektronik LH & RH Außen Spiegel   |  | T93 Spezial Tail und Stop Lampen                |
| DD9                 | Heizbare Außenspiegel              |  | UD2 Alarm bei Geschwindigkeit > (105 KH)        |
| DL8                 | zwei elektr. Außenspiegel          |  | UD6 Alarm - Abgas Temperatur                    |
| FE1                 | Soft Ride Suspension               |  | UK1 Japanische Radio Frequenz                   |
| FE7                 | Heavy Duty Suspension              |  | UL2 Europa Radio Frequenz                       |
| G95                 | Economy Übersetzung Differential   |  | U03 Hupe mit Lautstärken Regulation             |
| GH0                 | 3.54 Übersetzung Hinterachse       |  | U18 Export Tacho                                |
| GM1                 | 2.59 Übersetzung Hinterachse       |  | U19 Instrument Cluster, Kilometers/Miles        |
| GM3                 | 3.45 Übersetzung Hinterachse       |  |   |
| GU2                 | 2.73 Übersetzung Hinterachse       |  | U52 Cluster, Elektronik                         |
| GW4                 | 3.31 Übersetzung Hinterachse       |  | U75 Power Antenne                               |
| G44                 | 3.07 Übersetzung Hinterachse       |  | UQ4 Bose Lautsprecher System                    |
| G87                 | 8.5 - Inch Ring Gear               |  | UX0 Delco Bose 6-Lautsprecher Stereo System     |
| JL9                 | Anti Blockier System (Vorn/Hinten) |  | VD1 Europa Modifikation                         |
| J55                 | Heavy Duty Brakes                  |  | VE1 Japanische Modifikation                     |
| K09                 | 120 Amp Generator                  |  | V70 Front Tow Hook - Export                     |
| K68                 | 105 Amp Generator                  |  | XAU Reifen vorn: P275/40ZR17                    |
| KW2                 | 124-Amp Generator                  |  | YAU Reifen hinten: P275/40ZR17                  |





<http://www.corvette-c4.eu/>

Seite 17

## Corvette C4



|            |                             |  |            |                            |
|------------|-----------------------------|--|------------|----------------------------|
| <b>L83</b> | Motor, 5.7L V8, CFI         |  | <b>YBE</b> | Reifen hinten: P315/35ZR17 |
| <b>L98</b> | Motor, 5.7L V8, TPI (VIN 8) |  | <b>Z49</b> | Canada Basis Ausstattung   |



# Corvette C4



## 1984 Option Code

| Code # | Option Beschreibung                         | Anzahl | Preis US \$ |
|--------|---|--------|-------------|
| 1YY07  | Basis Corvette Sport Coupe                  | 51547  | 21.800,00   |
| AG9    | elektr. Fahrer Sitz                         | 48702  | 210,00      |
| AQ9    | Sport Sitze Stoff                           | 4003   | 625,00      |
| AR9    | Standard Sitze Leder                        | 40568  | 400,00      |
| AU3    | elektr. Türverriegelung                     | 49545  | 165,00      |
| CC3    | Glas Targa Dach                             | 15767  | 595,00      |
| D84    | Zwei Tone Lackierung                        | 8755   | 428,00      |
| FG3    | Delco Bilstein Stossdämpfer                 | 3729   | 189,00      |
| G92    | Performance Axle Ratio                      | 410    | 22,00       |
| KC4    | Motor Öl Kühler                             | 4295   | 158,00      |
| K34    | Tempomat                                    | 49832  | 185,00      |
| MM4    | 4-Gang Handschaltung                        | 6443   | 0,00        |
| QZD    | P255/50VR16 Reifen                          | 51547  | 561,20      |
| UL5    | ohne Radio                                  | 104    | -331,00     |
| UM6    | AM-FM Stereo Radio mit Cassette             | 6689   | 153,00      |
| UN8    | CB Funk                                     | 178    | 215,00      |
| UU8    | Delco-Bose AM-FM Stereo System mit Cassette | 43607  | 895,00      |
| V01    | größere Wasserkühler                        | 12008  | 57,00       |
| YF5    | California Abgas Ausstattung                | 6833   | 75,00       |
| Z51    | Performance Fahrwerk                        | 25995  | 600,20      |
| Z6A    | Heizbare Spiegel und Heckscheibe            | 47680  | 160,00      |



# Corvette C4



## 1984 Option Code

|       |   |       |  |
|-------|---|-------|--|
| 10    | Außen Farbe weiß                        | 6417  |  |
| 16    | Außen Farbe silber Metallic             | 3109  |  |
| 18    | Außen Farbe grau Metallic               | 3147  |  |
| 19    | Außen Farbe schwarz                     | 7906  |  |
| 20    | Außen Farbe hell blau Metallic          | 1196  |  |
| 23    | Außen Farbe mittel blau Metallic        | 1822  |  |
| 53    | Außen Farbe gold Metallic               | 2430  |  |
| 63    | Außen Farbe hell bronze Metallic        | 2452  |  |
| 66    | Außen Farbe dunkel bronze Metallic      | 1371  |  |
| 72    | Außen Farbe rot                         | 12942 |  |
| 16/18 | Außen Farbe silber / mittel grau        | 3629  |  |
| 20/23 | Außen Farbe hell blau / mittel blau     | 1433  |  |
| 63/66 | Außen Farbe hell bronze / dunkel bronze | 3693  |  |
|       |   |       |  |
| 12C   | Innen Farbe Graphit Stoff               | 1580  |  |
| 12V   | Innen Farbe Graphit Sport Stoff         | 1251  |  |
| 122   | Innen Farbe Graphit Leder               | 10921 |  |
| 15C   | Innen Farbe mittel grau Stoff           | 806   |  |
| 15V   | Innen Farbe mittel grau Sport Stoff     | 594   |  |
| 152   | Innen Farbe mittel grau Leder           | 5141  |  |
| 28C   | Innen Farbe mittel blau Stoff           | 2858  |  |
| 28V   | Innen Farbe mittel blau Sport Stoff     | 924   |  |
| 62C   | Innen Farbe sand Stoff                  | 684   |  |
| 62V   | Innen Farbe sand Sport Stoff            | 548   |  |
| 622   | Innen Farbe sand Leder                  | 5453  |  |
| 65C   | Innen Farbe bronze Stoff                | 1048  |  |
| 65V   | Innen Farbe bronze Sport Stoff          | 686   |  |
| 652   | Innen Farbe bronze Leder                | 6285  |  |
| 742   | Innen Farbe carmine Leder               | 12768 |  |



# Corvette C4



## 1985 Option Code

| Code # | Option Beschreibung                         | Anzahl | Preis US \$ |
|--------|---|--------|-------------|
| 1YY07  | Basis Corvette Sport Coupe                  | 39729  | 25.403,00   |
| AG9    | elektr. Fahrer Sitz                         | 37856  | 215,00      |
| AQ9    | Sport Sitze Leder                           |        | 1025,00     |
| AR9    | Standard Sitze Leder                        |        | 400,00      |
|        | Sport Sitze Stoff                           | 5661   | 625,00      |
| AU3    | elektr. Türverriegelung                     | 38294  | 170,00      |
| CC3    | Glas Targa Dach                             | 28134  | 595,00      |
| D84    | Zwei Tone Lackierung                        | 6033   | 428,00      |
| FG3    | Delco Bilstein Stossdämpfer                 | 9333   | 189,00      |
| G92    | Performance Axle Ratio                      | 5447   | 22,00       |
| K34    | Tempomat                                    | 38369  | 185,00      |
| MM4    | 4-Gang Handschaltung                        | 9576   | 0,00        |
| NN5    | California Abgas Ausstattung                | 6583   | 99,00       |
| QZD    | P255/50VR16 Reifen                          | 39729  | 561,20      |
| UL5    | ohne Radio                                  | 172    | -256,00     |
| UM6    | AM-FM Stereo Radio mit Cassette             | 2958   | 122,00      |
| UN8    | CB Funk                                     | 16     | 215,00      |
| UU8    | Delco-Bose AM-FM Stereo System mit Cassette | 35998  | 895,00      |
| V08    | größere Wasserkühler                        | 17539  | 225,00      |
| Z51    | Performance Fahrwerk                        | 14802  | 470,00      |
| Z6A    | Heizbare Spiegel und Heckscheibe            | 37720  | 160,00      |



# Corvette C4



## 1985 Option Code

|       |   |       |  |
|-------|---|-------|--|
| 13    | Außen Farbe silber Metallic             | 1752  |  |
| 18    | Außen Farbe grau Metallic               | 2519  |  |
| 20    | Außen Farbe hell blau Metallic          | 1021  |  |
| 23    | Außen Farbe mittel blau Metallic        | 2041  |  |
| 40    | Außen Farbe weiß                        | 4455  |  |
| 41    | Außen Farbe schwarz                     | 7603  |  |
| 53    | Außen Farbe gold Metallic               | 1411  |  |
| 63    | Außen Farbe hell bronze Metallic        | 1440  |  |
| 66    | Außen Farbe dunkel bronze Metallic      | 1030  |  |
| 81    | Außen Farbe rot                         | 10424 |  |
| 13/18 | Außen Farbe silber / mittel grau        | 2170  |  |
| 20/23 | Außen Farbe hell blau / mittel blau     | 1470  |  |
| 63/66 | Außen Farbe hell bronze / dunkel bronze | 2393  |  |
|       |   |       |  |
| 12C   | Innen Farbe Graphit Stoff               | 818   |  |
| 12V   | Innen Farbe Graphit Sport Stoff         | 1763  |  |
| 122   | Innen Farbe Graphit Leder               | 9346  |  |
| 15C   | Innen Farbe mittel grau Stoff           | 571   |  |
| 15V   | Innen Farbe mittel grau Sport Stoff     | 1045  |  |
| 152   | Innen Farbe mittel grau Leder           | 3579  |  |
| 28C   | Innen Farbe mittel blau Stoff           | 957   |  |
| 28V   | Innen Farbe mittel blau Sport Stoff     | 1365  |  |
| 282   | Innen Farbe mittel blau Leder           | 2121  |  |
| 62C   | Innen Farbe sand Stoff                  | 349   |  |
| 62V   | Innen Farbe sand Sport Stoff            | 607   |  |
| 622   | Innen Farbe sand Leder                  | 3759  |  |
| 65C   | Innen Farbe bronze Stoff                | 417   |  |
| 65V   | Innen Farbe bronze Sport Stoff          | 881   |  |
| 652   | Innen Farbe bronze Leder                | 3878  |  |
| 742   | Innen Farbe carmine Leder               | 8272  |  |



# Corvette C4



## 1986 Option Code

| Code # | Option Beschreibung                         | Anzahl | Preis US \$ |
|--------|---|--------|-------------|
| 1YY07  | Basis Corvette Sport Coupe                  | 27794  | 27.027,00   |
| 1YY67  | Basis Corvette Cabrio                       | 7315   | 32.032,00   |
| AG9    | elektr. Fahrer Sitz                         | 33983  | 225,00      |
| AQ9    | Sport Sitze Leder                           | 13372  | 1025,00     |
| AR9    | Standard Sitze Leder                        |        | 400,00      |
| AU3    | elektr. Türverriegelung                     | 34215  | 175,00      |
| B4P    | Verstärkter Ventilator (Kühler)             | 8216   | 75,00       |
| B4Z    | Käufer Feature Packung                      | 4832   | 195,00      |
| C2L    | Glas Targa Dach + Standard Dach             | 6242   | 895,00      |
| 24S    | Glas Targa Dach blau                        | 12021  | 595,00      |
| 64S    | Glas Targa Dach bronze                      | 7819   | 595,00      |
| C68    | Elektronische Klimaanlage                   | 16646  | 150,00      |
| D84    | Zwei Tone Lackierung                        | 3897   | 428,00      |
| FG3    | Delco Bilstein Stossdämpfer                 | 5521   | 189,00      |
| G92    | Performance Axle Ratio                      | 4879   | 22,00       |
| KC4    | Motor Öl Kühler                             | 7394   | 110,00      |
| K34    | Tempomat                                    | 34197  | 185,00      |
| MM4    | 4-Gang Handschaltung                        | 6835   | 0,00        |
| NN5    | California Abgas Ausstattung                | 5697   | 99,00       |
| UL5    | ohne Radio                                  | 166    | -256,00     |
| UM6    | AM-FM Stereo Radio mit Cassette             | 2039   | 122,00      |
| UU8    | Delco-Bose AM-FM Stereo System mit Cassette | 32478  | 895,00      |
| V01    | größere Wasserkühler                        | 10423  | 40,00       |
| Z51    | Performance Fahrwerk                        | 12821  | 470,00      |
| Z6A    | Heizbare Spiegel und Heckscheibe            | 21837  | 165,00      |
| 4001ZA | Malcolm Konner Spezial Edition              | 50     | 500,00      |



## Corvette C4



# 1986 Option Code

|       |   |      |  |
|-------|---|------|--|
| 13    | Außen Farbe silber Metallic             | 1209 |  |
| 18    | Außen Farbe grau Metallic               | 1603 |  |
| 20    | Außen Farbe hell blau Metallic          | 128  |  |
| 35    | Außen Farbe gelb                        | 1464 |  |
| 40    | Außen Farbe weiß                        | 4176 |  |
| 41    | Außen Farbe schwarz                     | 5464 |  |
| 53    | Außen Farbe gold Metallic               | 777  |  |
| 59    | Außen Farbe silber beige Metallic       | 1383 |  |
| 66    | Außen Farbe dunkel bronze Metallic      | 4    |  |
| 69    | Außen Farbe braun Metallic              | 488  |  |
| 74    | Außen Farbe dunkel rot                  | 5002 |  |
| 81    | Außen Farbe rot                         | 9466 |  |
| 13/18 | Außen Farbe silber / mittel grau        | 1049 |  |
| 18/41 | Außen Farbe grau / schwarz              | 1138 |  |
| 40/13 | Außen Farbe weiß / silber               | 693  |  |
| 59/69 | Außen Farbe silber beige / mittel braun | 1014 |  |
| spec  | Außen Farbe silber beige / schwarz      | 50   |  |



# Corvette C4



## 1987 Option Code

| Code # | Option Beschreibung                         | Anzahl | Preis US \$ |
|--------|---|--------|-------------|
| 1YY07  | Basis Corvette Sport Coupe                  | 20007  | 27.999,00   |
| 1YY67  | Basis Corvette Cabrio                       | 10625  | 33.172,00   |
| AC1    | elektr. Beifahrer Sitz                      | 17123  | 240,00      |
| AC3    | elektr. Fahrer Sitz                         | 29561  | 240,00      |
| AQ9    | Sport Sitze Leder                           | 14119  | 1025,00     |
| AR9    | Standard Sitze Leder                        | 14561  | 400,00      |
| AU3    | elektr. Türverriegelung                     | 29748  | 190,00      |
| B2K    | Callaway Twin Turbo                         | 167    | 19.995,00   |
| B4P    | Verstärkter Ventilator (Kühler)             | 21551  | 75,00       |
| C2L    | Glas Targa Dach + Standard Dach             | 5017   | 915,00      |
| 24S    | Glas Targa Dach blau                        | 8883   | 615,00      |
| 64S    | Glas Targa Dach bronze                      | 5766   | 615,00      |
| C68    | Elektronische Klimaanlage                   | 20875  | 150,00      |
| DL8    | Beheizte Spiegel                            | 6840   | 35,00       |
| D74    | Ablendbarer Spiegel                         | 14992  | 58,00       |
| D84    | Zwei Tone Lackierung                        | 1361   | 428,00      |
| FG3    | Delco Bilstein Stossdämpfer                 | 16216  | 189,00      |
| G92    | Performance Axle Ratio                      | 7286   | 22,00       |
| KC4    | Motor Öl Kühler                             | 20939  | 110,00      |
| K34    | Tempomat                                    | 29594  | 185,00      |
| MM4    | 4-Gang Handschaltung                        | 4298   | 0,00        |
| NN5    | California Abgas Ausstattung                | 5423   | 99,00       |
| UL5    | ohne Radio                                  | 247    | -256,00     |
| UM6    | AM-FM Stereo Radio mit Cassette             | 2236   | 132,00      |
| UU8    | Delco-Bose AM-FM Stereo System mit Cassette | 27721  | 905,00      |
| V01    | größere Wasserkühler                        | 22131  | 40,00       |
| Z51    | Performance Fahrwerk                        | 1596   | 795,00      |
| Z52    | Performance Fahrwerk Sport                  | 12662  | 470,00      |
| Z6A    | Heizbare Spiegel und Heckscheibe            | 19043  | 165,00      |





# Corvette C4



## 1987 Option Code

|       |   |      |  |
|-------|---|------|--|
| 13    | Außen Farbe silber Metallic             | 767  |  |
| 18    | Außen Farbe grau Metallic               | 1035 |  |
| 20    | Außen Farbe hell blau Metallic          | 2677 |  |
| 35    | Außen Farbe gelb                        | 1051 |  |
| 40    | Außen Farbe weiß                        | 3097 |  |
| 41    | Außen Farbe schwarz                     | 5101 |  |
| 53    | Außen Farbe gold Metallic               | 397  |  |
| 59    | Außen Farbe silber beige Metallic       | 950  |  |
| 66    | Außen Farbe dunkel bronze Metallic      | 87   |  |
| 69    | Außen Farbe braun Metallic              | 245  |  |
| 74    | Außen Farbe dunkel rot                  | 5578 |  |
| 81    | Außen Farbe rot                         | 8285 |  |
| 13/18 | Außen Farbe silber / mittel grau        | 403  |  |
| 18/41 | Außen Farbe grau / schwarz              | 316  |  |
| 40/13 | Außen Farbe weiß / silber               | 195  |  |
| 59/69 | Außen Farbe silber beige / mittel braun | 447  |  |
|       |   |      |  |
|       |   |      |  |
|       |   |      |  |
| 12C   | Innen Farbe Graphit Stoff               | 928  |  |
| 15C   | Innen Farbe mittel grau Stoff           | 265  |  |
| 21C   | Innen Farbe blau Stoff                  | 262  |  |
| 62C   | Innen Farbe sand Stoff                  | 371  |  |
| 65C   | Innen Farbe bronze Stoff                | 115  |  |
| 122   | Innen Farbe Graphit Leder               | 5570 |  |
| 152   | Innen Farbe mittel grau Leder           | 999  |  |
| 212   | Innen Farbe blau Leder                  | 1076 |  |
| 622   | Innen Farbe sand Leder                  | 2636 |  |
| 652   | Innen Farbe bronze Leder                | 627  |  |
| 732   | Innen Farbe rot Leder                   | 3653 |  |
|       |   |      |  |
| 122   | Innen Farbe Graphit Sport Leder         | 5585 |  |
| 152   | Innen Farbe mittel grau Sport Leder     | 854  |  |
| 212   | Innen Farbe blau Sport Leder            | 1051 |  |
| 622   | Innen Farbe sand Sport Leder            | 2583 |  |
| 652   | Innen Farbe bronze Sport Leder          | 530  |  |
| 732   | Innen Farbe rot Sport Leder             | 3516 |  |



# Corvette C4



## 1988 Option Code

| Code # | Option Beschreibung                         | Anzahl | Preis US \$ |
|--------|---|--------|-------------|
| 1YY07  | Basis Corvette Sport Coupe                  | 15382  | 29.489,00   |
| 1YY67  | Basis Corvette Cabrio                       | 7407   | 34.820,00   |
| AC1    | elektr. Beifahrer Sitz                      | 18779  | 240,00      |
| AC3    | elektr. Fahrer Sitz                         | 22084  | 240,00      |
| AQ9    | Sport Sitze Leder                           | 12724  | 1025,00     |
| AR9    | Standard Sitze Leder                        | 9043   | 400,00      |
| B2K    | Callaway Twin Turbo                         | 105    | 25.895,00   |
| B4P    | Verstärkter Ventilator (Kühler)             | 19035  | 75,00       |
| C2L    | Glas Targa Dach + Standard Dach             | 5091   | 915,00      |
| 24S    | Glas Targa Dach blau                        | 8332   | 615,00      |
| 64S    | Glas Targa Dach bronze                      | 3337   | 615,00      |
| C68    | Elektronische Klimaanlage                   | 19372  | 150,00      |
| DL8    | Beheizte Spiegel                            | 6582   | 35,00       |
| D74    | Ablendbarer Spiegel                         | 14249  | 58,00       |
| FG3    | Delco Bilstein Stossdämpfer                 | 18437  | 189,00      |
| G92    | Performance Axle Ratio                      | 4497   | 22,00       |
| KC4    | Motor Öl Kühler                             | 18877  | 110,00      |
| MM4    | 4-Gang Handschaltung                        | 4282   | 0,00        |
| NN5    | California Abgas Ausstattung                | 3882   | 99,00       |
| UL5    | ohne Radio                                  | 179    | -297,00     |
| UU8    | Delco-Bose AM-FM Stereo System mit Cassette | 20304  | 773,00      |
| V01    | größere Wasserkühler                        | 19271  | 40,00       |
| Z01    | 35 Jahre Edition                            | 2050   | 4795,00     |
| Z51    | Performance Fahrwerk                        | 1309   | 1295,00     |
| Z52    | Performance Fahrwerk Sport                  | 16017  | 970,00      |
| Z6A    | Heizbare Spiegel und Heckscheibe            | 14648  | 165,00      |



# Corvette C4



## 1988 Option Code

|       |                                       |      |  |
|-------|---------------------------------------|------|--|
| 13    | Außen Farbe silber Metallic           | 385  |  |
| 20    | Außen Farbe mittel blau Metallic      | 1148 |  |
| 28    | Außen Farbe dunkel blau Metallic      | 1675 |  |
| 35    | Außen Farbe gelb                      | 578  |  |
| 40    | Außen Farbe weiß                      | 3620 |  |
| 41    | Außen Farbe schwarz                   | 3420 |  |
| 74    | Außen Farbe dunkel rot                | 2878 |  |
| 81    | Außen Farbe rot                       | 5340 |  |
| 90    | Außen Farbe grau Metallic             | 644  |  |
| 96    | Außen Farbe charcoal Metallic         | 1046 |  |
| 40/41 | Außen Farbe weiß / schwarz (35 Jahre) | 2050 |  |
|       |                                       |      |  |
|       |                                       |      |  |
|       |                                       |      |  |
| 19C   | Innen Farbe schwarz Stoff             | 736  |  |
| 60C   | Innen Farbe saddle Stoff              | 286  |  |
| 192   | Innen Farbe schwarz Leder             | 3087 |  |
| 212   | Innen Farbe blau Leder                | 789  |  |
| 602   | Innen Farbe saddle Leder              | 1449 |  |
| 732   | Innen Farbe rot Leder                 | 2492 |  |
| 902   | Innen Farbe grau Leder                | 1226 |  |
|       |                                       |      |  |
| 113   | Innen Farbe weiß Sport Leder          | 2050 |  |
| 192   | Innen Farbe schwarz Sport Leder       | 3747 |  |
| 212   | Innen Farbe blau Sport Leder          | 919  |  |
| 602   | Innen Farbe saddle Sport Leder        | 1757 |  |
| 732   | Innen Farbe rot Sport Leder           | 2913 |  |
| 902   | Innen Farbe grau Sport Leder          | 1338 |  |



# Corvette C4



## 1989 Option Code

| Code # | Option Beschreibung                         | Anzahl | Preis US \$ |
|--------|---|--------|-------------|
| 1YY07  | Basis Corvette Sport Coupe                  | 16663  | 31.545,00   |
| 1YY67  | Basis Corvette Cabrio                       | 9749   | 36.785,00   |
| AC1    | elektr. Beifahrer Sitz                      | 20578  | 240,00      |
| AC3    | elektr. Fahrer Sitz                         | 25606  | 240,00      |
| AQ9    | Sport Sitze Leder                           | 1777   | 1025,00     |
| AR9    | Standard Sitze Leder                        | 23364  | 400,00      |
| B2K    | Callaway Twin Turbo                         | 51     | 25.895,00   |
| B4P    | Verstärkter Ventilator (Kühler)             | 20281  | 75,00       |
| CC2    | Hardtop                                     | 1573   | 1.995,00    |
| C2L    | Glas Targa Dach + Standard Dach             | 5274   | 915,00      |
| 24S    | Glas Targa Dach blau                        | 8748   | 615,00      |
| 64S    | Glas Targa Dach bronze                      | 4042   | 615,00      |
| C68    | Elektronische Klimaanlage                   | 24675  | 150,00      |
| D74    | Ablenkbare Spiegel                          | 17414  | 58,00       |
| FX3    | Elektronisches Fahrwerk                     | 1573   | 1695,00     |
| G92    | Performance Axle Ratio                      | 10211  | 22,00       |
| K05    | Motor Heizung                               | 2182   | 20,00       |
| KC4    | Motor Öl Kühler                             | 20162  | 110,00      |
| MN6    | 6-Gang Handschaltung ZF                     | 4113   | 0,00        |
| NN5    | California Abgas Ausstattung                | 4501   | 100,00      |
| UJ6    | Reifendruck Überwachung                     | 6976   | 325,00      |
| UU8    | Delco-Bose AM-FM Stereo System mit Cassette | 24145  | 773,00      |
| V01    | größere Wasserkühler                        | 20888  | 40,00       |
| V56    | Gepäckträger Cabrio                         | 616    | 140,00      |
| Z51    | Performance Fahrwerk                        | 2224   | 575,00      |



# Corvette C4



## 1989 Option Code

|     |                                  |      |  |
|-----|----------------------------------|------|--|
| 10  | Außen Farbe weiß                 | 5426 |  |
| 20  | Außen Farbe mittel blau Metallic | 1428 |  |
| 28  | Außen Farbe dunkel blau Metallic | 1931 |  |
| 41  | Außen Farbe schwarz              | 4855 |  |
| 68  | Außen Farbe dunkel rot Metallic  | 3409 |  |
| 81  | Außen Farbe rot                  | 7663 |  |
| 90  | Außen Farbe grau Metallic        | 225  |  |
| 96  | Außen Farbe charcoal Metallic    | 1440 |  |
|     |                                  |      |  |
|     |                                  |      |  |
|     |                                  |      |  |
| 19C | Innen Farbe schwarz Stoff        | 871  |  |
| 60C | Innen Farbe saddle Stoff         | 400  |  |
| 192 | Innen Farbe schwarz Leder        | 8186 |  |
| 212 | Innen Farbe blau Leder           | 1428 |  |
| 602 | Innen Farbe saddle Leder         | 4159 |  |
| 732 | Innen Farbe rot Leder            | 6714 |  |
| 902 | Innen Farbe grau Leder           | 2877 |  |
|     |                                  |      |  |
| 192 | Innen Farbe schwarz Sport Leder  | 852  |  |
| 212 | Innen Farbe blau Sport Leder     | 55   |  |
| 602 | Innen Farbe saddle Sport Leder   | 226  |  |
| 732 | Innen Farbe rot Sport Leder      | 425  |  |
| 902 | Innen Farbe grau Sport Leder     | 219  |  |



# Corvette C4



## 1990 Option Code

| Code # | Option Beschreibung                              | Anzahl | Preis US \$ |
|--------|--|--------|-------------|
| 1YY07  | Basis Corvette Sport Coupe                       | 16016  | 31.979,00   |
| 1YY67  | Basis Corvette Cabrio                            | 7630   | 37.264,00   |
| AC1    | elektr. Beifahrer Sitz                           | 20419  | 270,00      |
| AC3    | elektr. Fahrer Sitz                              | 23109  | 270,00      |
| AQ9    | Sport Sitze Leder                                | 11457  | 1050,00     |
| AR9    | Standard Sitze Leder                             | 11649  | 425,00      |
| B2K    | Callaway Twin Turbo                              | 59     | 26.895,00   |
| CC2    | Hardtop  | 2371   | 1.995,00    |
| C2L    | Glas Targa Dach + Standard Dach                  | 6422   | 915,00      |
| 24S    | Glas Targa Dach blau                             | 7852   | 615,00      |
| 64S    | Glas Targa Dach bronze                           | 4340   | 615,00      |
| C68    | Elektronische Klimaanlage                        | 22497  | 180,00      |
| FX3    | Elektronisches Fahrwerk                          | 7576   | 1695,00     |
| G92    | Performance Axle Ratio                           | 9362   | 22,00       |
| K05    | Motor Heizung                                    | 1585   | 20,00       |
| KC4    | Motor Öl Kühler                                  | 16221  | 110,00      |
| MN6    | 6-Gang Handschaltung ZF                          | 8101   | 0,00        |
| NN5    | California Abgas Ausstattung                     | 4035   | 100,00      |
| UJ6    | Reifendruck Überwachung                          | 8432   | 325,00      |
| UU8    | Delco-Bose AM-FM Stereo System mit Cassette      | 6701   | 823,00      |
| U1F    | Delco-Bose AM-FM Stereo System mit Cassette + CD | 15716  | 1219,00     |
| V56    | Gepäckträger Cabrio                              | 1284   | 140,00      |
| Z51    | Performance Fahrwerk                             | 5446   | 460,00      |
| ZR1    | Spezial Paket                                    | 3049   | 27.016,00   |



# Corvette C4



## 1990 Option Code

|     |                                 |      |  |
|-----|---------------------------------|------|--|
| 10  | Außen Farbe weiß                | 4872 |  |
| 25  | Außen Farbe stahl blau Metallic | 813  |  |
| 41  | Außen Farbe schwarz             | 4759 |  |
| 42  | Außen Farbe turquoise Metallic  | 589  |  |
| 53  | Außen Farbe gelb                | 278  |  |
| 68  | Außen Farbe dunkel rot Metallic | 2353 |  |
| 81  | Außen Farbe rot                 | 6956 |  |
| 91  | Außen Farbe polo grün Metallic  | 1674 |  |
| 96  | Außen Farbe charcoal Metallic   | 878  |  |
|     |                                 |      |  |
|     |                                 |      |  |
|     |                                 |      |  |
| 19C | Innen Farbe schwarz Stoff       | 398  |  |
| 60C | Innen Farbe saddle Stoff        | 142  |  |
| 193 | Innen Farbe schwarz Leder       | 4701 |  |
| 223 | Innen Farbe blau Leder          | 395  |  |
| 603 | Innen Farbe saddle Leder        | 2050 |  |
| 733 | Innen Farbe rot Leder           | 3070 |  |
| 903 | Innen Farbe grau Leder          | 1433 |  |
|     |                                 |      |  |
| 193 | Innen Farbe schwarz Sport Leder | 4977 |  |
| 223 | Innen Farbe blau Sport Leder    | 341  |  |
| 603 | Innen Farbe saddle Sport Leder  | 1952 |  |
| 733 | Innen Farbe rot Sport Leder     | 2818 |  |
| 903 | Innen Farbe grau Sport Leder    | 1369 |  |



# Corvette C4



## 1991 Option Code

| Code # | Option Beschreibung                              | Anzahl | Preis US \$ |
|--------|--|--------|-------------|
| 1YY07  | Basis Corvette Sport Coupe                       | 14967  | 32.455,00   |
| 1YY67  | Basis Corvette Cabrio                            | 5672   | 38.770,00   |
| AC1    | elektr. Beifahrer Sitz                           | 17267  | 270,00      |
| AC3    | elektr. Fahrer Sitz                              | 19937  | 270,00      |
| AQ9    | Sport Sitze Leder                                | 10650  | 1050,00     |
| AR9    | Standard Sitze Leder                             | 9505   | 425,00      |
| B2K    | Callaway Twin Turbo                              | 63     | 33.000,00   |
| CC2    | Hardtop  | 1230   | 1.995,00    |
| C2L    | Glas Targa Dach + Standard Dach                  | 5031   | 915,00      |
| 24S    | Glas Targa Dach blau                             | 6991   | 615,00      |
| 64S    | Glas Targa Dach bronze                           | 3036   | 615,00      |
| C68    | Elektronische Klimaanlage                        | 19233  | 180,00      |
| FX3    | Elektronisches Fahrwerk                          | 6894   | 1695,00     |
| G92    | Performance Axle Ratio                           | 3453   | 22,00       |
| K05    | Motor Heizung                                    | 334    | 20,00       |
| KC4    | Motor Öl Kühler                                  | 7525   | 110,00      |
| MN6    | 6-Gang Handschaltung ZF                          | 5875   | 0,00        |
| NN5    | California Abgas Ausstattung                     | 3050   | 100,00      |
| UJ6    | Reifendruck Überwachung                          | 5175   | 325,00      |
| UU8    | Delco-Bose AM-FM Stereo System mit Cassette      | 3786   | 823,00      |
| U1F    | Delco-Bose AM-FM Stereo System mit Cassette + CD | 15345  | 1219,00     |
| V56    | Gepäckträger Cabrio                              | 886    | 140,00      |
| Z07    | Verstellbares Handling Paket                     | 733    | 2155,00     |
| ZR1    | Spezial Paket                                    | 3049   | 31.683,00   |





# Corvette C4



## 1991 Option Code

|     |                                 |      |  |
|-----|---------------------------------|------|--|
| 10  | Außen Farbe weiß                | 4305 |  |
| 25  | Außen Farbe stahl blau Metallic | 835  |  |
| 35  | Außen Farbe gelb                | 650  |  |
| 41  | Außen Farbe schwarz             | 3909 |  |
| 42  | Außen Farbe turquoise Metallic  | 1621 |  |
| 75  | Außen Farbe dunkel rot Metallic | 1311 |  |
| 80  | Außen Farbe quasar blau         | 1038 |  |
| 81  | Außen Farbe rot                 | 5318 |  |
| 91  | Außen Farbe polo grün Metallic  | 1230 |  |
| 96  | Außen Farbe charcoal Metallic   | 417  |  |
|     |                                 |      |  |
|     |                                 |      |  |
|     |                                 |      |  |
| 19C | Innen Farbe schwarz Stoff       | 379  |  |
| 60C | Innen Farbe saddle Stoff        | 105  |  |
| 193 | Innen Farbe schwarz Leder       | 4670 |  |
| 223 | Innen Farbe blau Leder          | 443  |  |
| 603 | Innen Farbe saddle Leder        | 1463 |  |
| 733 | Innen Farbe rot Leder           | 2014 |  |
| 903 | Innen Farbe grau Leder          | 915  |  |
|     |                                 |      |  |
| 193 | Innen Farbe schwarz Sport Leder | 5327 |  |
| 223 | Innen Farbe blau Sport Leder    | 366  |  |
| 603 | Innen Farbe saddle Sport Leder  | 1516 |  |
| 733 | Innen Farbe rot Sport Leder     | 2467 |  |
| 903 | Innen Farbe grau Sport Leder    | 974  |  |



# Corvette C4



## 1992 Option Code

| Code # | Option Beschreibung                              | Anzahl | Preis US \$ |
|--------|--|--------|-------------|
| 1YY07  | Basis Corvette Sport Coupe                       | 14604  | 33.635,00   |
| 1YY67  | Basis Corvette Cabrio                            | 5875   | 40.145,00   |
| AC1    | elektr. Beifahrer Sitz                           | 16179  | 305,00      |
| AC3    | elektr. Fahrer Sitz                              | 19378  | 305,00      |
| AQ9    | Sport Sitze Leder                                | 7973   | 1100,00     |
| AQ9    | Sport Sitze Leder weiß                           | 709    | 1180,00     |
| AR9    | Standard Sitze Leder                             | 10565  | 475,00      |
| CC2    | Hardtop  | 915    | 1.995,00    |
| C2L    | Glas Targa Dach + Standard Dach                  | 3739   | 950,00      |
| 24S    | Glas Targa Dach blau                             | 6424   | 650,00      |
| 64S    | Glas Targa Dach bronze                           | 3005   | 650,00      |
| C68    | Elektronische Klimaanlage                        | 18460  | 205,00      |
| FX3    | Elektronisches Fahrwerk                          | 5840   | 1695,00     |
| G92    | Performance Axle Ratio                           | 2283   | 50,00       |
| K05    | Motor Heizung                                    | 368    | 20,00       |
| MN6    | 6-Gang Handschaltung ZF                          | 5487   | 0,00        |
| NN5    | California Abgas Ausstattung                     | 3092   | 100,00      |
| UJ6    | Reifendruck Überwachung                          | 3416   | 325,00      |
| UU8    | Delco-Bose AM-FM Stereo System mit Cassette      | 3241   | 823,00      |
| U1F    | Delco-Bose AM-FM Stereo System mit Cassette + CD | 15199  | 1219,00     |
| V56    | Gepäckträger Cabrio                              | 845    | 140,00      |
| Z07    | Verstellbares Handling Paket                     | 738    | 2045,00     |
| ZR1    | Spezial Paket                                    | 502    | 31.683,00   |



## Corvette C4



# 1992 Option Code

|     |                                    |      |  |
|-----|------------------------------------|------|--|
| 10  | Außen Farbe weiß                   | 4101 |  |
| 35  | Außen Farbe gelb                   | 678  |  |
| 41  | Außen Farbe schwarz                | 3209 |  |
| 43  | Außen Farbe Wasser Metallic        | 1953 |  |
| 45  | Außen Farbe polo grün Metallic     | 1995 |  |
| 73  | Außen Farbe black rose Metallic    | 1886 |  |
| 75  | Außen Farbe dunkel rot Metallic    | 1148 |  |
| 80  | Außen Farbe quasar blau            | 1043 |  |
| 81  | Außen Farbe rot                    | 4466 |  |
|     |                                    |      |  |
|     |                                    |      |  |
|     |                                    |      |  |
| 103 | Innen Farbe weiß Leder             | 752  |  |
| 143 | Innen Farbe hell grau Leder        | 1651 |  |
| 19C | Innen Farbe schwarz Stoff          | 480  |  |
| 193 | Innen Farbe schwarz Leder          | 4932 |  |
| 643 | Innen Farbe hell beige Leder       | 2148 |  |
| 733 | Innen Farbe rot Leder              | 1834 |  |
|     |                                    |      |  |
| 103 | Innen Farbe weiß Sport Leder       | 709  |  |
| 143 | Innen Farbe hell grau Sport Leder  | 1183 |  |
| 193 | Innen Farbe schwarz Sport Leder    | 3774 |  |
| 643 | Innen Farbe hell beige Sport Leder | 1615 |  |
| 733 | Innen Farbe rot Sport Leder        | 1401 |  |



# Corvette C4



## 1993 Option Code

| Code # | Option Beschreibung                              | Anzahl | Preis US \$ |
|--------|--|--------|-------------|
| 1YY07  | Basis Corvette Sport Coupe                       | 15898  | 34.595,00   |
| 1YY67  | Basis Corvette Cabrio                            | 5692   | 41.195,00   |
| AC1    | elektr. Beifahrer Sitz                           | 18067  | 305,00      |
| AC3    | elektr. Fahrer Sitz                              | 20626  | 305,00      |
| AQ9    | Sport Sitze Leder                                | 11267  | 1100,00     |
| AQ9    | Sport Sitze Leder weiß                           | 622    | 1180,00     |
| AR9    | Standard Sitze Leder                             | 8509   | 475,00      |
| AR9    | Standard Sitze Leder weiß                        | 766    | 555,00      |
| CC2    | Hardtop  | 976    | 1.995,00    |
| C2L    | Glas Targa Dach + Standard Dach                  | 4204   | 950,00      |
| 24S    | Glas Targa Dach blau                             | 6203   | 650,00      |
| 64S    | Glas Targa Dach bronze                           | 4288   | 650,00      |
| C68    | Elektronische Klimaanlage                        | 19550  | 205,00      |
| FX3    | elektronisches Fahrwerk                          | 5740   | 1695,00     |
| G92    | Performance Axle Ratio                           | 2630   | 50,00       |
| K05    | Motor Heizung                                    | 406    | 20,00       |
| MN6    | 6-Gang Handschaltung ZF                          | 5330   | 0,00        |
| NN5    | California Abgas Ausstattung                     | 2401   | 100,00      |
| UJ6    | Reifendruck Überwachung                          | 3353   | 325,00      |
| UU8    | Delco-Bose AM-FM Stereo System mit Cassette      | 2685   | 823,00      |
| U1F    | Delco-Bose AM-FM Stereo System mit Cassette + CD | 16794  | 1219,00     |
| V56    | Gepäckträger Cabrio                              | 765    | 140,00      |
| Z07    | Verstellbares Handling Paket                     | 824    | 2045,00     |
| Z25    | 40 Jahre Packet                                  | 6749   | 1.455,00    |
| ZR1    | Spezial Paket                                    | 448    | 31.683,00   |



# Corvette C4



## 1993 Option Code

|     |                                  |      |  |
|-----|----------------------------------|------|--|
| 10  | Außen Farbe weiß                 | 3031 |  |
| 41  | Außen Farbe schwarz              | 2684 |  |
| 43  | Außen Farbe Wasser Metallic      | 1305 |  |
| 45  | Außen Farbe polo grün Metallic   | 2189 |  |
| 53  | Außen Farbe gelb                 | 517  |  |
| 68  | Außen Farbe ruby rot             | 6749 |  |
| 70  | Außen Farbe torch rot            | 3172 |  |
| 73  | Außen Farbe black rose Metallic  | 935  |  |
| 75  | Außen Farbe dunkel rot Metallic  | 325  |  |
| 80  | Außen Farbe quasar blau          | 683  |  |
|     |                                  |      |  |
|     |                                  |      |  |
|     |                                  |      |  |
| 103 | Innen Farbe weiß Leder           | 1388 |  |
| 143 | Innen Farbe hell grau Leder      | 1743 |  |
| 19C | Innen Farbe schwarz Stoff        | 425  |  |
| 193 | Innen Farbe schwarz Leder        | 6075 |  |
| 643 | Innen Farbe hell beige Leder     | 3177 |  |
| 703 | Innen Farbe rot Leder            | 2033 |  |
|     |                                  |      |  |
| 793 | Innen Farbe ruby rot Sport Leder | 6749 |  |



# Corvette C4



## 1994 Option Code

| Code # | Option Beschreibung                              | Anzahl | Preis US \$ |
|--------|--|--------|-------------|
| 1YY07  | Basis Corvette Sport Coupe                       | 17984  | 36.185,00   |
| 1YY67  | Basis Corvette Cabrio                            | 5346   | 42.960,00   |
| AC1    | elektr. Beifahrer Sitz                           | 17863  | 305,00      |
| AC3    | elektr. Fahrer Sitz                              | 21592  | 305,00      |
| AQ9    | Sport Sitze Leder                                | 9023   | 625,00      |
| CC2    | Hardtop  | 682    | 1.995,00    |
| C2L    | Glas Targa Dach + Standard Dach                  | 3875   | 950,00      |
| 24S    | Glas Targa Dach blau                             | 7064   | 650,00      |
| 64S    | Glas Targa Dach bronze                           | 3979   | 650,00      |
| FX3    | elektronisches Fahrwerk                          | 4570   | 1695,00     |
| G92    | Performance Axle Ratio                           | 9019   | 50,00       |
| MN6    | 6-Gang Handschaltung ZF                          | 6012   | 0,00        |
| NG1    | New York Abgas Ausstattung                       | 1363   | 100,00      |
| UJ6    | Reifendruck Überwachung                          | 5097   | 325,00      |
| U1F    | Delco-Bose AM-FM Stereo System mit Cassette + CD | 17579  | 396,00      |
| WY5    | Reifen Mobilität                                 | 2781   | 70,00       |
| YF5    | California Abgas Ausstattung                     | 2372   | 100,00      |
| Z07    | Verstellbares Handling Paket                     | 887    | 2045,00     |
| ZR1    | Spezial Paket                                    | 448    | 31.683,00   |



## Corvette C4



# 1994 Option Code

|     |                                 |       |  |
|-----|---------------------------------|-------|--|
| 10  | Außen Farbe weiß                | 4066  |  |
| 28  | Außen Farbe admiral blau        | 1584  |  |
| 41  | Außen Farbe schwarz             | 4136  |  |
| 43  | Außen Farbe Wasser Metallic     | 1209  |  |
| 45  | Außen Farbe polo grün Metallic  | 3534  |  |
| 53  | Außen Farbe gelb                | 834   |  |
| 66  | Außen Farbe kupfer Metallic     | 116   |  |
| 70  | Außen Farbe torch rot           | 5073  |  |
| 73  | Außen Farbe black rose Metallic | 1267  |  |
| 75  | Außen Farbe dunkel rot Metallic | 1511  |  |
|     |                                 |       |  |
|     |                                 |       |  |
|     |                                 |       |  |
| 143 | Innen Farbe hell grau Leder     | 3765  |  |
| 193 | Innen Farbe schwarz Leder       | 10145 |  |
| 643 | Innen Farbe hell beige Leder    | 5826  |  |
| 703 | Innen Farbe rot Leder           | 3594  |  |



# Corvette C4



## 1995 Option Code

| Code # | Option Beschreibung                              | Anzahl | Preis US \$ |
|--------|--|--------|-------------|
| 1YY07  | Basis Corvette Sport Coupe                       | 15771  | 36.785,00   |
| 1YY67  | Basis Corvette Cabrio                            | 4971   | 43.665,00   |
| AG1    | elektr. Fahrer Sitz                              | 19012  | 305,00      |
| AG2    | elektr. Beifahrer Sitz                           | 15323  | 305,00      |
| AQ9    | Sport Sitze Leder                                | 7908   | 625,00      |
| CC2    | Hardtop  | 459    | 1.995,00    |
| C2L    | Glas Targa Dach + Standard Dach                  | 2979   | 950,00      |
| 24S    | Glas Targa Dach blau                             | 4688   | 650,00      |
| 64S    | Glas Targa Dach bronze                           | 2871   | 650,00      |
| FX3    | elektronisches Fahrwerk                          | 3421   | 1695,00     |
| G92    | Performance Axle Ratio                           | 10056  | 50,00       |
| MN6    | 6-Gang Handschaltung ZF                          | 4784   | 0,00        |
| NG1    | New York Abgas Ausstattung                       | 268    | 100,00      |
| N84    | Spare Tire Delete                                | 418    | -100,00     |
| UJ6    | Reifendruck Überwachung                          | 5300   | 325,00      |
| U1F    | Delco-Bose AM-FM Stereo System mit Cassette + CD | 15528  | 396,00      |
| WY5    | Reifen Mobilität                                 | 3783   | 70,00       |
| YF5    | California Abgas Ausstattung                     | 2026   | 100,00      |
| Z07    | Verstellbares Handling Paket                     | 753    | 2045,00     |
| Z4Z    | Indy 500 Pace Car                                | 527    | 2816,00     |
| ZR1    | Spezial Paket                                    | 448    | 31.258,00   |





# Corvette C4



## 1995 Option Code

|       |                                  |      |  |
|-------|----------------------------------|------|--|
| 05    | Außen Farbe dunkel lila Metallic | 1049 |  |
| 05/10 | Außen Farbe dunkel lila / weiß   | 527  |  |
| 10    | Außen Farbe weiß                 | 3381 |  |
| 28    | Außen Farbe admiral blau         | 1006 |  |
| 41    | Außen Farbe schwarz              | 3959 |  |
| 43    | Außen Farbe Wasser Metallic      | 909  |  |
| 45    | Außen Farbe polo grün Metallic   | 2940 |  |
| 53    | Außen Farbe gelb                 | 1003 |  |
| 70    | Außen Farbe torch rot            | 4531 |  |
| 75    | Außen Farbe dunkel rot Metallic  | 1437 |  |
|       |                                  |      |  |
|       |                                  |      |  |
|       |                                  |      |  |
| 143   | Innen Farbe hell grau Leder      | 3219 |  |
| 193   | Innen Farbe schwarz Leder        | 8831 |  |
| 194   | Innen Farbe schwarz Leder Sport  | 527  |  |
| 643   | Innen Farbe hell beige Leder     | 5493 |  |
| 703   | Innen Farbe rot Leder            | 2672 |  |



# Corvette C4



## 1996 Option Code

| Code # | Option Beschreibung                              | Anzahl | Preis US \$ |
|--------|--|--------|-------------|
| 1YY07  | Basis Corvette Sport Coupe                       | 17167  | 37.225,00   |
| 1YY67  | Basis Corvette Cabrio                            | 4369   | 45.060,00   |
| AG1    | elektr. Fahrer Sitz                              | 19798  | 305,00      |
| AG2    | elektr. Beifahrer Sitz                           | 17060  | 305,00      |
| AQ9    | Sport Sitze Leder                                | 12016  | 625,00      |
| CC2    | Hardtop  | 429    | 1.995,00    |
| C2L    | Glas Targa Dach + Standard Dach                  | 3983   | 950,00      |
| 24S    | Glas Targa Dach blau                             | 6626   | 650,00      |
| 64S    | Glas Targa Dach bronze                           | 2492   | 650,00      |
| F45    | elektronisches Fahrwerk                          | 2896   | 1695,00     |
| G92    | Performance Axle Ratio                           | 9801   | 50,00       |
| LT4    | 330 PS Motor                                     | 6359   | 1450,00     |
| MN6    | 6-Gang Handschaltung ZF                          | 6359   | 0,00        |
| N84    | Spare Tire Delete                                | 986    | -100,00     |
| UJ6    | Reifendruck Überwachung                          | 6865   | 325,00      |
| U1F    | Delco-Bose AM-FM Stereo System mit Cassette + CD | 17037  | 396,00      |
| WY5    | Reifen Mobilität                                 | 4945   | 70,00       |
| Z15    | Collector Editon                                 | 5412   | 1250,00     |
| Z16    | Grand Sport Paket                                | 1000   | 3250,00     |
| Z51    | Performance Handing Paket                        | 1869   | 350,00      |



# Corvette C4



## 1996 Option Code

|     |   |      |  |
|-----|---|------|--|
| 05  | Außen Farbe dunkel lila Metallic                | 320  |  |
| 10  | Außen Farbe weiß                                | 3210 |  |
| 13  | Außen Farbe silber                              | 5412 |  |
| 28  | Außen Farbe admiral blau                        | 1000 |  |
| 41  | Außen Farbe schwarz                             | 3917 |  |
| 43  | Außen Farbe Wasser Metallic                     | 357  |  |
| 45  | Außen Farbe polo grün Metallic                  | 2414 |  |
| 53  | Außen Farbe gelb                                | 488  |  |
| 70  | Außen Farbe torch rot                           | 4418 |  |
|     |   |      |  |
|     |   |      |  |
|     |   |      |  |
| 143 | Innen Farbe hell grau Leder                     | 2134 |  |
| 144 | Innen Farbe hell grau Leder Sport               | 2359 |  |
| 193 | Innen Farbe schwarz Leder                       | 6869 |  |
| 194 | Innen Farbe schwarz Leder Sport                 | 2513 |  |
| 195 | Innen Farbe Grand Sport schwarz Leder Sport     | 730  |  |
| 643 | Innen Farbe hell beige Leder                    | 4319 |  |
| 703 | Innen Farbe rot Leder                           | 1793 |  |
| 704 | Innen Farbe rot Leder Collector                 | 540  |  |
| 705 | Innen Farbe Grand Sport rot/schwarz Leder Sport | 270  |  |